

IG192HFP Hyper Fast Poll Modem

High Speed Industrial Grade 19.2 kbps Hyper Fast Poll Multi-Drop Modem for Industrial, Utility & SCADA Applications

The Data Connect IG192HFP Industrial Grade 19.2kbps Hyper Fast Poll industrial modem is the highest performance triple mode, full featured leased line modem of its class. These modems are designed for rugged industrial automation, utility, and SCADA communications. Boasting the latest innovative digital signal processing (DSP) technology, the IG192HFP modem delivers a 17.4 ms training time (RTS-CTS delay) at 19200bps. The modem will fall back to support 9600/4800/2400 bps at 23 ms RTS-CTS delay, as well as Bell 202T and V.23 operation. The IG192HFP is ideal for point-to-point and multi-point polling network with the industry's fastest training time.



The IG192HFP Industrial Grade 19.2 kbps Hyper Fast Poll modem is designed to operate over 4-wire full duplex or 2-wire half duplex unconditioned leased lines or private metallic circuits. For optimum performance, the modem employs QAM modulations and Viterbi decoding scheme along with its adaptive equalizer to communicate over a variety of transmission lines. The IG192HFP supports DTE/RTUs with an EIA RS-232 and RS-485 serial port at speeds of 19200, 9600, 4800, 2400, and 1200 bps. With its Auto-RTS mode, the modem can support DTE/RTUs with 3-wire serial interface (TD, RD, SG) in point-to-point and multi-point polling applications.

The triple mode capability allows the IG192HFP Industrial Grade 19.2 kbps Hyper Fast Poll modem to communicate with the older generation DSP9612FP at up to 9600 kbps and both the Bell 202T and V.23 FSK modems at up to 1200 bps.

The IG192HFP Industrial Grade 19.2 kbps Hyper Fast Poll modem is designed to operate over a wide range of AC or DC power supply voltages and temperatures. With proven reliability and ease of installation, the IG192HFP is ideal for point-to-multipoint polling networks, where fast training time and low-network latency are critical for system performance.

Specifications

Triple Mode:

Hyper Fast Poll mode at 19200bps. 17.4 ms RTS-CTS delay
QAM mode at 9600/4800/2400bps. 23 ms RTS-CTS delay
FSK mode for both Bell 202T (0-1800bps) and V23 (0-1200bps)

DTE/RTU Interface:

RS-232 interface with full control signals support (DB-9F)
RS-485/RS422 support, 4-wire F.D., or 2-wire H.D.
Auto RTS and forced RTS option to support 3-wire interface

Leased Line Interface:

TELCO 2- or 4- wire conditioned or unconditioned lines
Private metallic 2 or 4 wire circuits
Cable equalizers for long distance over standard cables

Mechanical

Enclosure Dimensions:
5.0"(W) x 6.75"(L) x 1.3" (H)
127mm(W) x 172mm(L) x 33mm(H)

Diagnostics:

Local or remote Analog + digital loopback
Eight (8) front panel LEDs for status monitoring

AC and DC Power Support

Standalone: 10-48 VDC, 85-400 VDC, 100-240 AC
Rack Mount module: Plug-in RM16M modem rack

Power + Current Consumption

125 mA @ 12 VDC
28.0 mA @ 48VDC

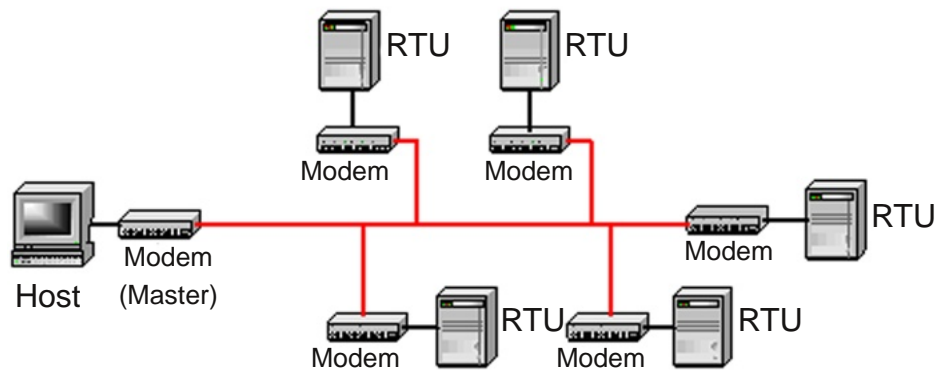
Environmental

Operating Temperature: -40 to 85°C,
Storage Temperature: -40 to 100°C
Humidity: up to 95%, non-condensing

Optional Mounting Kits:

Wall-mount or panel mount kit
DIN rail mounting kit

Application Diagram



Multi-point Polling Network with the IG192HFP

Ordering Information

Model No.	Description
IG192HFP	Standalone AC voltage (100-240 VAC)
IG192HFP-LV	Standalone DC voltage (10-48 VDC)
IG192HFP-HV	Standalone High DC voltage (100-240 VAC, 85-400 VDC)
IG192HFP-RM	RM16M Rack-mount module
IG192HFP-WMB	Wall-mount/panel-mount kit
IG192HFP-DIN	DIN rail mounting kit

Contact Information

Data Connect Enterprise
3405 Olandwood Ct.
Olney, MD, 20832
Phone# 301.924.7400
Toll Free# 1.888.4WANLAN
Fax# 301.924.7403
sales@data-connect.com
www.dataconnectus.com

