

# MD14.4 SERIES

The Data Connect MD14.4 is the rackmount version of the Data Connect MIU14.4 and MIU14.4-LV. The same functionality that can be found in the MIU14.4 and MIU14.4-LV can be found in the MD14.4.

The Data Connect MD14.4 is a Bell V.32bis modem designed for asynchronous operation at 0 to 14400bps over voice grade lines. The modem is intended for use on two-wire dial lines.

The MD14.4 is comprised of MDMC carrier card and PE14.4 module. Up to 18 MD14.4 can be front loaded into a MDR Modem Bank.

The MDR Modem Bank is an industrial grade 19" X 3U rack mountable chassis. The MDR Modem Bank is powered from a wide range of AC or DC voltages. Two power supply cards can be installed to provide automatic back up in the event the primary power supply fails. The MDR will operate in temperatures from -20°C to +85°C and is surge protected on both power and analog lines.

Two power supply slots are provided. Power supply cards are available for any voltage in the range 9-150VDC and 9-275VAC. A single power supply card will power all 18 MD14.4.

In addition to the MD14.4 the MDR Modem Bank also houses the MD28.8, MD14.4L, MD9.6FPD, and MD202T.

□

## Key Features

**14.4kbps  
2-Wire Dial  
Line Modem**

**IEC801-4  
Surge  
Protection**

**-20°C +80°  
Operating  
Temperature**

**For Meters,  
Relays, SCADA  
etc.**



# General Specifications

Modem Line Speeds:

Asynchronous 14000, 9600, 4800, 2400, 1200, 300bps

☐

DTE Rates:

Above modem line speeds (ie; with data compression)

57.6, 38.4, 19.2kbps

☐

Standards:

V.32bis, V.32, V.22bis, V.22, Bell 212A, Bell 103

☐

Transmission Line:

2-Wire Dial

☐

Compatibility:

Hayes Extended AT Command Set

☐

Digital Port:

RS232 with DB9 Connector

☐

Analog Port:

RJ11 Modular Jack

☐

Surge Protection:

(Power Line) 8kV [Exceeds IEC801-4] (20kV {IE801-5} available if required)

☐

Surge Protection:

3.75VAC

☐

Environment:

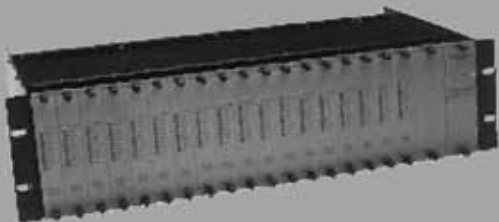
-40°C to +85°C, 0 to 95% humidity (non-condensing)

☐

Certifications:

FCC Part 68, Industry Canada

☐



## Model Numbers and Optional Features

DCE/MD14.4

Rackmount Card

DCE/PE14.4

Modem Card

DCE/MDMC

Carrier Card

DCE/MDR

Modem Bank

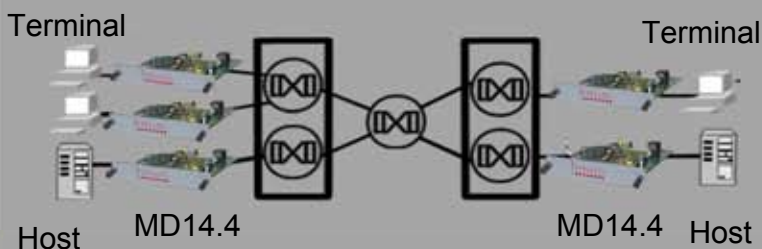
DCE/MIU14.4

Standalone Modem

DCE/MIU14.4-LV

DC Standalone Modem

## Basic Data Transmission Over the PSTN



3405 Olandwood Court,  
Olney, MD 20832  
301-924-7400  
Fax 301-924-7403

[www.data-connect.com](http://www.data-connect.com)  
[www.dataconnectus.com](http://www.dataconnectus.com)

Distributed by [www.clickitdirect.com](http://www.clickitdirect.com)

Doc no. 06172008MD144