

MIU202T SERIES

Bell 202T continues to be the standard of choice in many utility and industrial multi-drop data communications applications. The Data Connect Enterprise MIU202T can be powered from a wide range of AC and DC voltages, is surge protected on both the power and analog lines, and will operate in extreme heat and cold. Ideal for multi-drop applications over leased lines and private lines.

The MIU202T is a Bell Standard 202T modem designed for asynchronous operation at 0 to 1200 bps over voice grade lines and pilot wires. The modem is intended for use on leased lines and private lines and provides half-duplex communications on 2-wire lines, or full-duplex on 4-wire lines.

Most modem manufacturers have abandoned the Bell 202T in favor of the much higher speed modulation preferred in dial-up systems. However, Bell 202T remains the standard of choice in many utility and industrial applications where relatively small amounts of data are to be transmitted in multi-point networks.

To meet this continued demand, Data Connect Enterprise has added the MIU202T to its range of Communications Interface Units (see separate brochure).

The MIU202T can be powered from any AC or DC voltage in the range of 48V to 220V. A 9-36VDC version is also available. It is designed to work in extended temperatures ranging from -40°C to +80°C, and is surge protected to 8kV, double the voltage requirements of IEC801-4 standard.

All of this is bundled in a 5-3/8" x 4" x 1-3/8" non-metallic enclosure, suitable for desktop or wall mounting. Rack mount cards are also available for the Data Connect Enterprise "Myriad" system (see separate brochure).



Key Features

*0-1200 bps,
Leased Line
AC/DC POWERED
SUBSTATION
HARDENED
Bell 202T*

*0-1200 bps Over
Voice Grade
Leased Lines*

*Point-to-Point or
Multi-Point*

*48 to 220V AC/DC
Power Supply*

*9-36VDC Optional
Power Supply*

*IEC901-4 Surge
Protection*

*-40°C to +85°C
Operating Temp.*

*For Meters, RTUs,
SCADA, etc.*

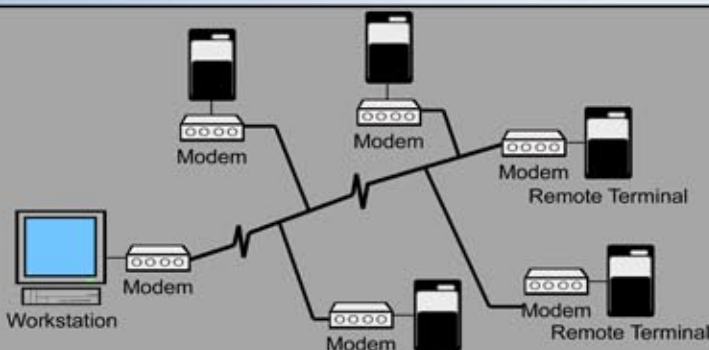
General Specifications

Data Rate:		Line Independence:	600 ohms
Asynchronous	0-1200 bps over voice grade leased lines or pilot wires	Antistreaming:	45 seconds or more
Modulation:	Bell 202T	Transmitter Output Level:	0 or -10dBm
	Phase Coherent, Frequency Shift Keyed (FSK)	Receive Sensitivity:	-33 or -43dBm
Operation:	Full Duplex Over 4-Wire Leased or Private Lines	RTS/CTS Delay:	1, 12, 35 or 50 msec
	Half Duplex Over 2-Wire Leased or Private Lines	Carrier Detect Delay:	8.5msec
	(Constant or Switched Carrier, DIP Switch Selectable)	Soft Carrier Turnoff:	8.3msec
Power Supply:	48VAC/DC (Optional 9-36VDC)	Test Features:	Analog Loopback
Power Consumption:	15mA @ 48VD; 7.5mA @ 115CDV; 7.5mA @ 125VDC		
Digital Port:	RS232 with DB9 Connector		
Analog Port:	RJ11		
Power Connector:	3-Pin with Screw Terminals for Customer Supplied Cable		
Case Size:	5-3/8" x 4" x 1-3/8"		
Surge Protection (Power Line):	8kV [Exceeds IEC801-4]		
Surge Protection (Analog Line):	3.75kVac		
Operating Equipment:	-40°C to +85°C, 0 to 95% humidity (non-condensing)		
Carrier Frequencies:			
Bell 202T...	Mark: 1200Hz ± 0.1% Space: 2200Hz ± 0.1%		



Model Numbers and Optional Features

MIU202T	2-4-wire leased line standalone
MIU202T-LV	2-4-wire leased line standalone 9-36VDC



Multi-point Polling Network with the MIU202T Modems



3405 Olandwood Court,
Olney, MD 20832
301-924-7400
Fax 301-924-7403

www.data-connect.com
www.dataconnectus.com