

MIU9.6FPD SERIES

To service the growing need for efficient, reliable data communication in a harsh environments of utility substations and industrial facilities, has developed a 9600 Fast Poll modem that can operate from various AC/DC power supplies and survive high surge levels and extreme heat and cold. All this without compromising the performance expected from state-of-the-art communications devices.

With the rapid move toward "intelligent" substations, where meters, relays, RTU's, SCADA systems, etc. are able to "talk" to a remote operator, communication devices such as modems are moving off the desktop and into the field, where the conveniences of 115VAC power outlets and climate control are usually hard to find.

Data Connect Enterprise has addressed this problem by developing the 9.6FPD designed specifically for harsh environments.

The 9.6FPD is a highly sophisticated full duplex, V.29 data modem that is designed to interface with RS232, RS485 (external device), 5V logic (TTL) or simple send and receive signals. The 9.6FPD operates at full or half duplex 2-wire or



Key Features

*Modem Interface
Units AC/DC
POWERED*

*SUBSTATION
HARDENED
Communication
Interface Units*

*9.6 kbps 2 & 4-Wire
Leased Line
Modem*

*48 to 220 AC/DC
Power Supply*

*IEC801-4 Surge
Protection*

*-40 Degrees
Celsius to +85
Degrees Celsius
Operating
Temperature*

*For Meters, Relays,
SCADA etc.*

General Specifications

Modem Line Speeds: Asynchronous 4800, 9600, 14000bps

DTE Rates: Above modem line speeds (ie; with data compression) 4800, 9600, 14000

Standards: V.27 & V.29

Transmission Line: 2 & 4 Wire Leased Line

Power Supply 48VAC/DC to 220VAC/DC (Optional 9-36VDC)

Power Connector: 4-ft AC Cord with 3-Pin Screw Terminal connector included

Case Size: 5-3/8" X 4" X1-3/8"

Digital Port: RS232 with DB9 Connector

Analog Port: RJ11 Modular Jack

Surge Protection: (Power Line) 8kV [Exceeds IEC801-4] (20kV {IE801-5} available if required)

Surge Protection: 3.75VAC

Environment: -40 Degrees Celsius to +85 Degrees Celsius, 0 to 95% humidity (non-condensing)

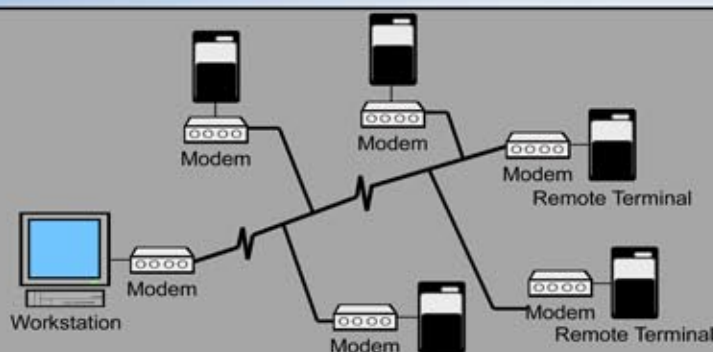
Certifications: FCC Part 68, Industry Canada



Model Numbers and Optional Features

DCE MIU9.6FPD 2-4-wire leased line
standalone

DCE MIU9.6FPD-LV 2-4 wire leased line
standalone low voltage



Multi-point Polling Network with the MIU9.6 Modems



3405 Olandwood Court,
Olney, MD 20832
301-924-7400
Fax 301-924-7403

www.data-connect.com
www.dataconnectus.com