

# ST202TE SERIES

For years, the Bell 202 modem has delivered reliable low speed multi-point communications. Today, this device still enjoys great popularity due to its ability to communicate under adverse conditions. The Bell 202 remains the right choice for telemetry applications, control systems, transaction applications, and for reliable data delivery over RF or cellular connections.

The Data Connect ST202TE Series offers a modern implementation of this classic modulation standard. In this design, we have utilized the latest semiconductor technology to guarantee a level of performance and reliability that cannot be matched by older designs.

The industrial-rated Data Connect ST202TE is housed in metal enclosures and is built too meet the most stringent criteria. Temperature ratings, for example, range from -40°C to +85°C. Versatile power supply options will meet most industrial applications.

The ST202TE Series was designed, however, to allow implementation of a wide variety of OEM applications. Like all Data Connect designs, it is microcontroller based so that it may support custom interfaces and protocols. In addition, the line interface of the ST202TE Series is capable of supporting, either leased circuits, dial circuits, or short hall twisted pair.

The ST202TE Series is available in our standalone or rackmount configurations. In addition, this device is available at the board level for OEM applications.

## *Key Features*

*Compatible with all standard Bell 202S or 202T modems.*

*Engineered and manufactured to industrial standards with metal enclosure.*

*Easy to configure.*

*4-Wire Leased Line (202T)  
2-Wire Leased Line (202S)*

*AC or DC Power*



# General Specifications

**Compatibility:** Bell 202S, Bell 202T.

**DTE Interface:** RS-232C (V.24) 0 – 1800bps.

**Configuration control:** Parameters set through switches

**Line Interface:** Standard 4-Wire Leased  
Standard 2-Wire Leased  
Optional 2-Wire Dial.

**Line Diagnostics:** DTE and Modem generated  
Test Patterns  
Local Analog Loopback  
Local Digital Loopback  
Remote Digital Loopback.

**Transmit Power:** Adjustable in 2db increments  
from 0dBm through -14dBm

**Power:** Standalone Unit – Automatically  
adjust  
9VAC or 9-14VDC  
Power Supply Options – 5.5-14VDC,  
18-75VDC, 66-160VDC.

**Rackmount –** Standard CC-2016 Rack  
automatically adjusts to  
85-265VAC, 27-440Hz. Optional DC Supply  
automatically adjusts to positive or negative  
36-75VDC.

**Operating Environment:**

-40°C to +85°C

Humidity – 95% non-condensing

**Approvals:**

FCC Part 68 & Part 15, Class A  
Optional International Approvals are available.

**Physical:**

Standalone Units –

Dimensions

6.19"L X 5.12"W X 1.75"H

Weight 30oz. (Metal Enclosure)

Rackmount Unit –

Fits ST-2016 Rack.

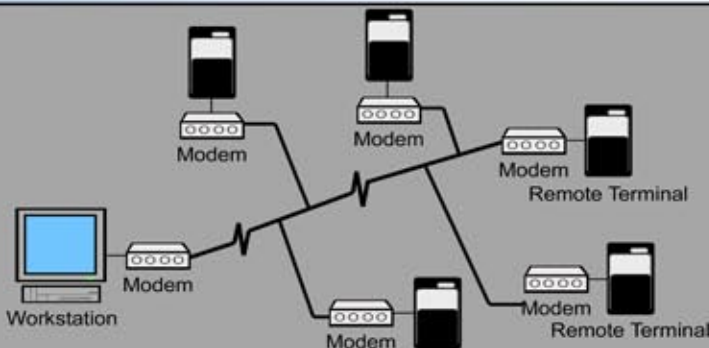
4.73"L X 4.60"W X .80H

Weight: 9oz.



## Model Numbers and Optional Features

DCE/ST202TE-037-4	2/4-wire standalone
DCE/ST202TR-037-4	2/4-wire rackmount
DCE/ST202TE-337-4	2/4-wire standalone, 18-75VDC
DCE/ST202TE-237-4	2/4-wire standalone, 5.5-14VDC
DCE/STCC-2016-01	115VAC chassis
DCE/STCC-2016-02	36-75VDC chassis
DCE/STCC-2016-03	230VAC chassis
DCE/STCC-2016-07	18-36VDC chassis



Multi-point Polling Network with the ST202TE Modems



3405 Olandwood Court,  
Olney, MD 20832  
301-924-7400  
Fax 301-924-7403

[www.data-connect.com](http://www.data-connect.com)  
[www.dataconnectus.com](http://www.dataconnectus.com)